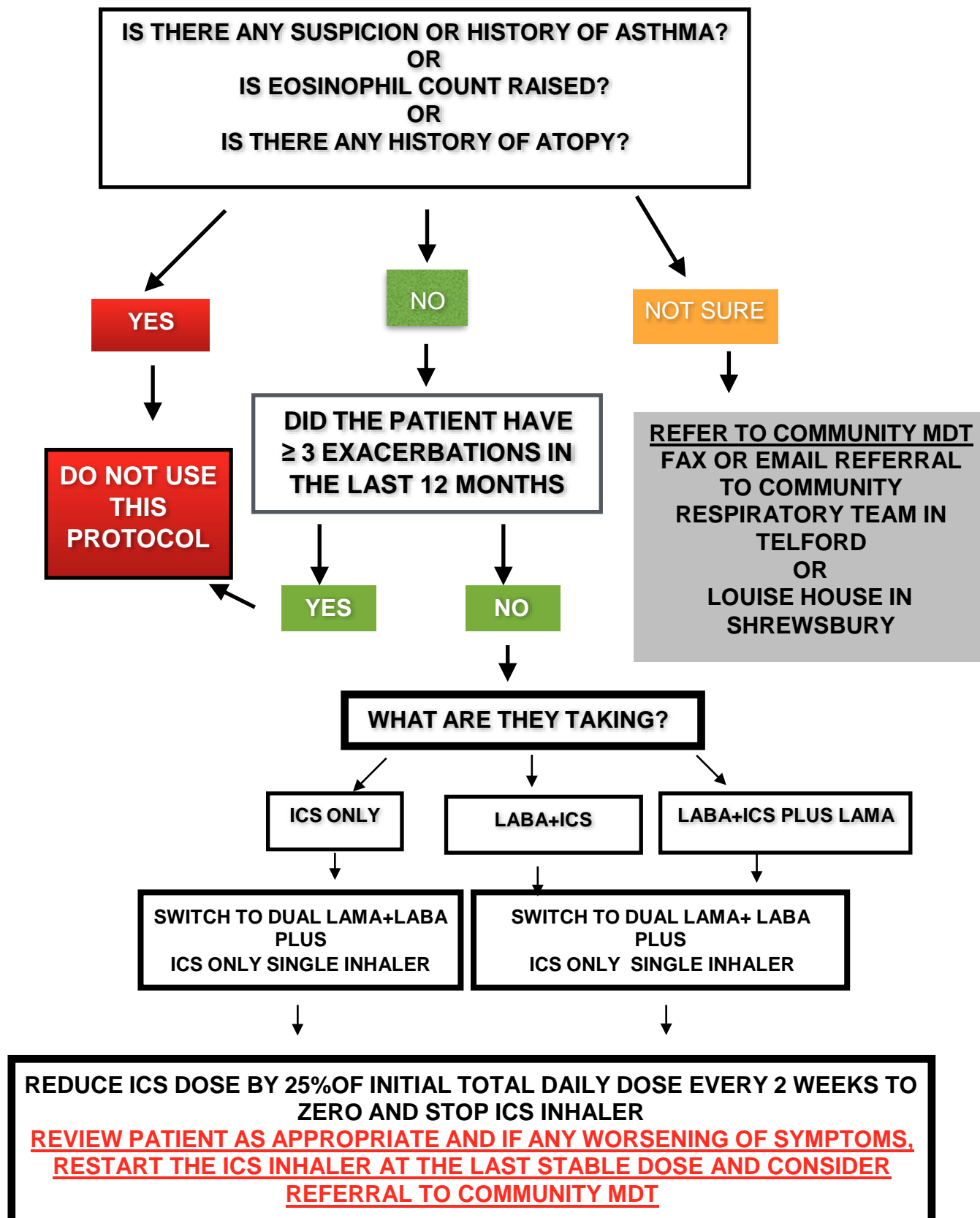


Protocol for weaning COPD patients on Inhaled Corticosteroids (Either as single or combination inhaler) to a Dual Bronchodilator Treatment

Evidence considered

Samy Suissa and Andrea Rossi. Weaning from inhaled corticosteroids in COPD: the evidence. European Respiratory Journal 2015 46: 1232-1235



LABA= LONG ACTING BETA AGONIST e.g. Salmeterol, Indacaterol
LAMA= LONG ACTING ANTI-MUSCARINIC e.g. Tiotropium, Glycopyrronium, Umeclidinium, Acclidinium
ICS= INHALED CORTICOSTEROID e.g. Beclomethasone, Budesonide, Fluticasone

*** PLEASE SEE SHROPSHIRE COPD GUIDELINES FOR LAMA+LABA INHALERS**

SCENARIO 1

SERETIDE 500 1 PUFF BD [Salmeterol 50mcg (LABA)+Fluticasone 500 mcg (ICS) per puff]
25% reduction in total initial ICS dose = 25 % of 1000 mcg= 250 mcg reduction every 2 weeks

CHANGE TO

LAMA+LABA COMBINATION (SEE GUIDELINES*)

Plus

FLUTICASONE Inhaler 250 2 Puffs AM and 2 Puffs PM

AT 2 WEEKS

LAMA+LABA

Plus

FLUTICASONE 250 1 Puff AM and 2 Puffs PM

AT 4 WEEKS

LAMA+LABA

Plus

FLUTICASONE 250 1 Puff AM and 1 Puff PM

AT 6 WEEKS

LAMA+LABA

Plus

FLUTICASONE 125 1 Puff AM and 1 Puff PM

AT 8 WEEKS

LAMA+LABA

Plus STOP ICS INHALER

SCENARIO 2

FOSTAIR 100/6 2 PUFFS BD [Formoterol 6mcg (LABA)+ Beclomethasone 100 mcg (ICS) per puff]
25% reduction in total initial ICS dose= 25% of 400 mcg= 100mcg reduction every 2 weeks

CHANGE TO

LAMA+LABA COMBINATION (SEE GUIDELINES)

Plus

CLENIL MODULITE (100 mcg) OR QVAR (50 mcg)* 2 Puffs AM and 2 Puffs PM

AT 2 WEEKS

LAMA+LABA

Plus

CLENIL MODULITE (100 mcg) OR QVAR (50 mcg)*1 Puff AM and 2 Puffs PM

AT 4 WEEKS

LAMA+LABA

Plus

CLENIL MODULITE (100 mcg) OR QVAR (50 mcg)*1 Puff AM and 1Puff PM

AT 6 WEEKS

LAMA+LABA

Plus

CLENIL MODULITE (100 mcg) OR QVAR (50 mcg)* 1Puff PM

AT 8 WEEKS

LAMA+LABA

Plus STOP ICS INHALER

SCENARIO 3

SYMBICORT 400/12 1 PUFF BD
[Formoterol 12 mcg (LABA)+Budesonide 400 mcg (ICS) per puff]
25% reduction in total initial ICS dose= 25% of 800 mcg= 200 mcg reduction every 2 weeks

CHANGE TO

LAMA+LABA COMBINATION (SEE GUIDELINES)

PLUS

CLENIL MODULITE (200 mcg) OR QVAR (100 mcg)* 2 Puffs AM and 2 Puffs PM

AT 2 WEEKS

LAMA+LABA

Plus

CLENIL MODULITE (200 mcg) OR QVAR (100 mcg)*1 Puff AM and 2 Puffs PM

AT 4 WEEKS

LAMA+LABA

Plus

CLENIL MODULITE (200 mcg) OR QVAR (100 mcg)*1 Puff AM and 1Puff PM

AT 6 WEEKS

LAMA+LABA

Plus

CLENIL MODULITE (100 mcg) OR QVAR (50 mcg)* 1Puff AM 1 Puff PM

AT 8 WEEKS

LAMA+LABA

Plus STOP ICS INHALER

***QVAR has double the potency of Clenil, hence 50 mcg dose used.**

Also, Fluticasone:beclometasone:budesonide potency ratio is 1:2:2

Fluticasone 200 mcg=Beclometasone 400 mcg=Budesonide 400 mcg