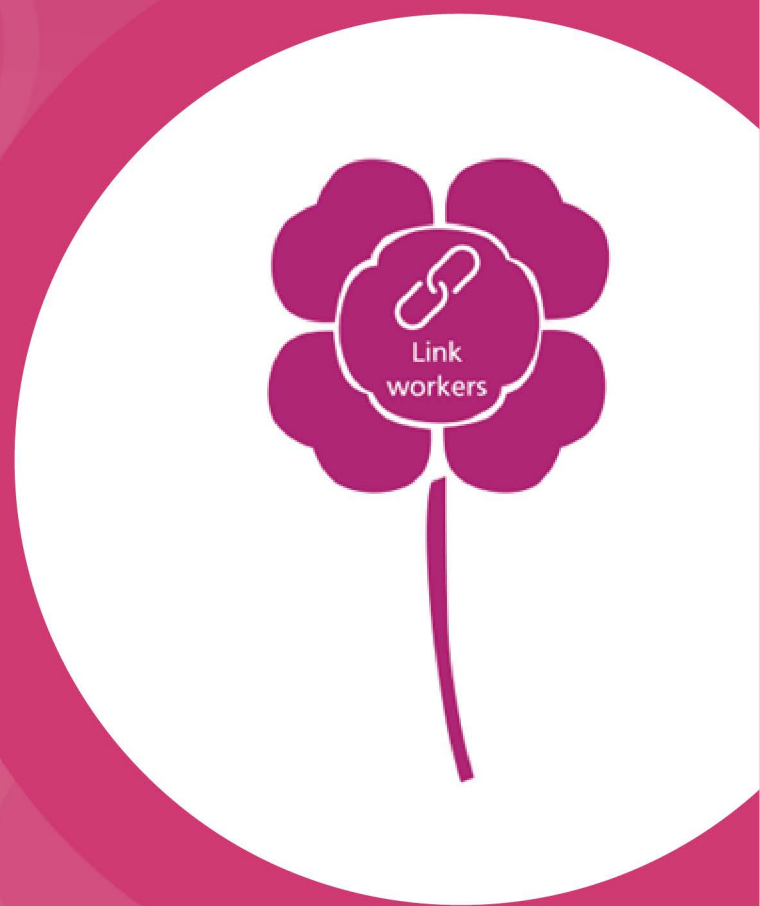






# Dementia Link Worker

---



A Dementia Link Worker will support you to keep up your community connections and make new ones as detailed in your Living Well Plan.

They will also:

-  Co-ordinate peer support groups.
-  Create opportunities for you to meet other people with dementia and their partners and families.
-  Connect you to local services for practical and emotional support.
-  Help you locate and access community facilities/groups and events (e.g. groups, organisations, charities, activities, theatre, museums, art galleries), where you can learn new skills and make new friends.



# Dementia Link Workers



As part of the Shropshire, Telford and Wrekin Dementia Vision, Dementia Link Workers, hosted by the Alzheimer's Society, have been introduced across the county and are now working alongside Admiral Nurses and the Dementia Assessment and Support Service to assist people living with dementia, to stay connected with their communities.

To achieve this, they help to coordinate peer support groups, create opportunities to meet other people living with dementia, connect an individual to local services for practical and emotional support and help them locate and access community facilities and events.

Nine workers have formed the new team that will serve the people of Shropshire, Telford and Wrekin. One of the Dementia Link workers, David Latcham offered an insight into his role. "Our role in the community means we will be able to support people to connect with the groups, services and activities that people with dementia will benefit from and enjoy.

"We know that maintaining activity is a really important part of helping someone live with dementia, so supporting people to do the things that they most want to do is an important aspect of this. We want to be able to grow a wider range of groups that are dementia friendly and accessible, and particularly opportunities for peer support"

Dementia Link Workers are also working closely with organisations and GP practices to help them become 'dementia friendly' enabling people living with dementia to reconnect with their community and carry on living life as they choose.

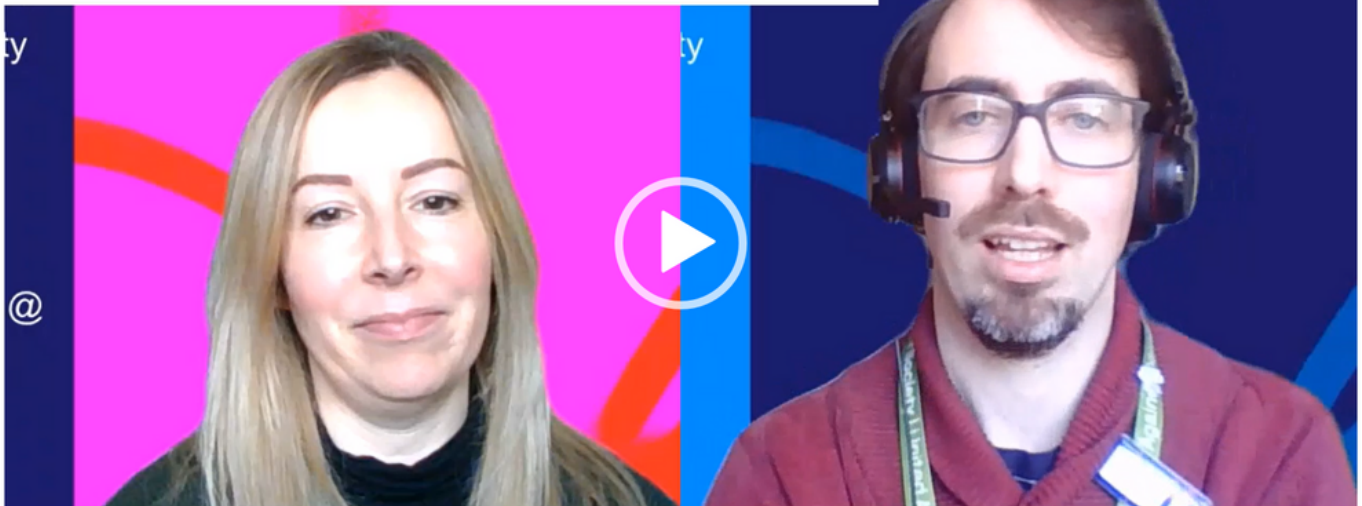




# Introduction to the Dementia Link Workers

Click below to watch a quick video with two of our Dementia Link Workers, Tracie Macpherson and David Latcham describing their role and the benefit the role can have to the people of Shropshire, Telford & Wrekin.

Introduction to the Dementia Link Workers  
Shrewsbury PCN



**Tracie Macpherson**

**David Latcham**

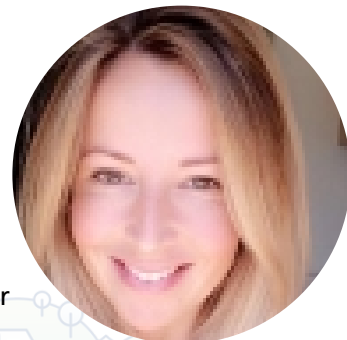
## David Latcham - Shrewsbury PCN

My name is David Latcham and I'm one of the Dementia Link workers in Shrewsbury for Alzheimer's Society. I help support people with dementia to access activities in their community, and engage with the things that are important to them.



## Tracie Macphersons - Shrewsbury PCN

I have worked for the Alzheimer's Society for nearly 5 years supporting people living with dementia and facilitating local support groups including Singing for the Brain. Previously to this role I worked within Children and Families services for Telford and Wrekin Council. I thoroughly enjoy my role, helping to make a positive difference to people affected by dementia.





## Dementia Link Workers

### Henry Flynn - South East Telford PCN

My name is Henry Flynn and I am a Dementia Advisor with Alzheimer's Society, in the Shropshire, Telford and Wrekin team, covering the areas around Court Street Medical Practice, Stirchley Medical Practice and Woodside Medical Practice (all part of the South East Telford Primary Care Network) as well as Ironbridge Medical Practice. I have many years' experience of supporting adults in health and social care settings.



### Andrea Maddox - Teldoc PCN

I have over 35 years of years of experience working with the elderly but especially people living with dementia, professionally and personally.

Previously worked in care homes, then with Social Services for thirteen years, providing person centered support, joint working with other health professional and outside agencies.



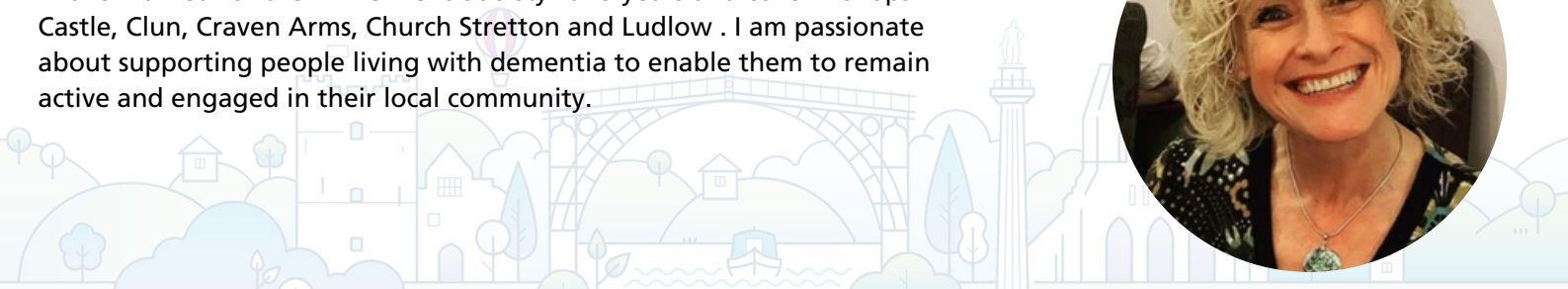
### Arlene King - Wrekin PCN

Having had recent experience of living with a person with dementia, I am now committed, using my skills and knowledge, to helping others affected by Dementia in the community. Ensuring people living with Dementia are well supported, engaged and are given opportunities to live well with dementia within our community.



### Lisa Wright - South West PCN

I have worked for the Alzheimer's Society for 3 years and cover Bishops Castle, Clun, Craven Arms, Church Stretton and Ludlow . I am passionate about supporting people living with dementia to enable them to remain active and engaged in their local community.





# Dementia Link Workers



## Julie Rose - South East Shropshire

I have 30 years' experience working with the elderly and learning disabilities in various job roles. My background with Dementia has been mainly focused on working one to one with the person with Dementia and supporting and advising family members. This has been from diagnosis to end of life care with some families.



## Jacquie Pomeroy - North Shropshire

I have worked for Alzheimer's Society since 2017 as a Dementia Adviser in N Shropshire and now cover the N Shropshire PCN which includes Oswestry, Whitchurch, Wem, Ellesmere and Market Drayton. I facilitate the Singing for the Brain group in Market Drayton and the Peer Support group in Whitchurch. I enjoy seeing the difference that the social engagement makes to peoples lives both at the groups and with one to one support.



## Linda Broadhurst - Newport & Central

I am a Dementia Adviser and have been with the Alzheimer's Society for nearly 5 years. My background is in Adult Social Care where I worked 23 years prior to the Alzheimer's Society. My priority is to work with anyone affected by dementia and to promote personal wellbeing.

